

INSTRUCTIONS FOR RF/ ACOUSTIC SLIP-IN FRAME INSTALLATION (3" THICK PANEL, RF 60 dB)

INSTALLATION INSTRUCTIONS

For the basic frame installation please reference IG#100. See below for Radio Frequency specific instructions for the installation of a RF/ Acoustic frame.

RF GROUNDING FILM

The panel 30 RF/Acoustic assemblies Krieger uses a combination of the Kriegeronic Acoustic Seal and the legacy RF, wire mesh, Monel seal. The Krieger slip-in frame uses a simple design that allows more flexibility and offers an easy solution for the installation of RF applications. KSP slip-in frames can easily be installed post wall construction by removing the external trim piece fasteners and the trim piece and placing the frame in the rough opening with the wall grounding film exposed to the trim face of the frame. Use the Krieger provided metalized tape to secure the film to the frame. Install the SS removable trim back in place over the tape and RF film to create a complete RF seal. Please see Figure A below on how to properly connect the RF wall film to the KSP removable SS trim. Ensure no paint is applied to the contact point between the door and wire mesh perimeter seal.

Note: Some gyp-board metal-stud partition types will require notching the stud, if a fitment conflict exists with the EPT's and/or DPS's mud-box.

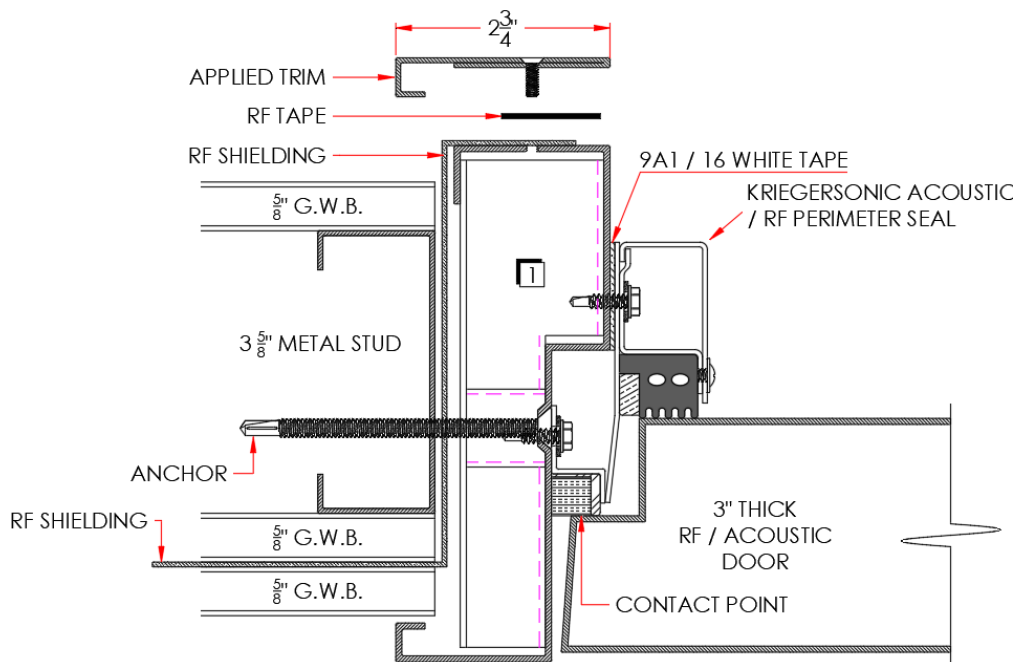


FIGURE A