

INSTALLATION OF SOUND DEADENING MATERIAL INTO ACOUSTIC FRAMES

WHEN INSTALLING A FRAME WITH A STC RATING OF 45 OR LESS THE FRAME MAY BE PACKED TIGHTLY WITH #8 DENSITY ROCK WOOL, WHEN THE STC RATING IS 46 OR HIGHER THE FRAME SHOULD BE GROUTED SOLID.

FOR FRAMES WITH “Z” ANCHORS OR NAILING CLIP ANCHORS

Grout frame before installation. Leave the frame spreader bar attached. Place the frame in a horizontal position on saw horses, two or three frames of the same size can be stacked up and grouted at the same time. Our installers use and recommend the use of “Gyps-O-Lite” by Gold Bond, or “Struct-O-Lite” by United States Gypsum. Either of these products should be readily available at building material supply houses. Allow grout to fully set up before removing spreader bar and installing frame (see installing frame below.)

‘Z’ Anchors: (metal studs)

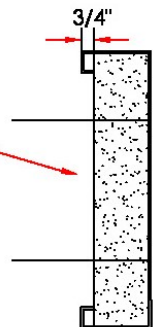
Punch & Dimple:

Mix grout to a very thick consistency and dry pack grout up to, but not over, the top of the ‘Z’ anchors or straps if P&D.



Nailing Clip Anchors (wood studs)

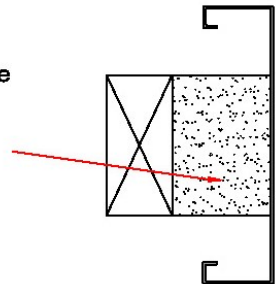
Mix grout to a very thick consistency and dry pack grout to within 3/4" of returns. (This allows gyp board to be recessed into throat of frame). Nailing clips should protrude straight out for grouting (can be bent to install).



For continuous channel anchors: (wood or metal studs)

Grout frame after installation, remove the frame spreader bar and install frame (see installing frame below).

The frame can be installed and the jambs framed in, leaving a boxed in compartment into which the grout can be poured. Before pouring grout into jambs, drop in two or three cups of dry grout mix into each jamb, this will help seal bottom of jambs against run out. Pour till jambs and head are full then frame in head. Grout should be consistency of thick mud.



INSTALLING FRAME

Use only solid heavy duty box metal studs with no holes in the web. (25 gauge “Tin Can” studs are NOT recommended). Set frame in position, with the jambs plumb and in plane, and with the head level, being particularly careful with pairs. Weld or screw through studs into anchors. Caulk the entire edge of the sheet rock that will butt up against the grout as shown below at A. Sheet rock is to be installed as deeply into the frame as possible, including all layers at multi-layer installations. Also, continuously caulk, (our installers use and recommend the use of “USG Acoustical Caulking”) the joint shown below at B on both sides of the wall and around the entire perimeter of the frame.

