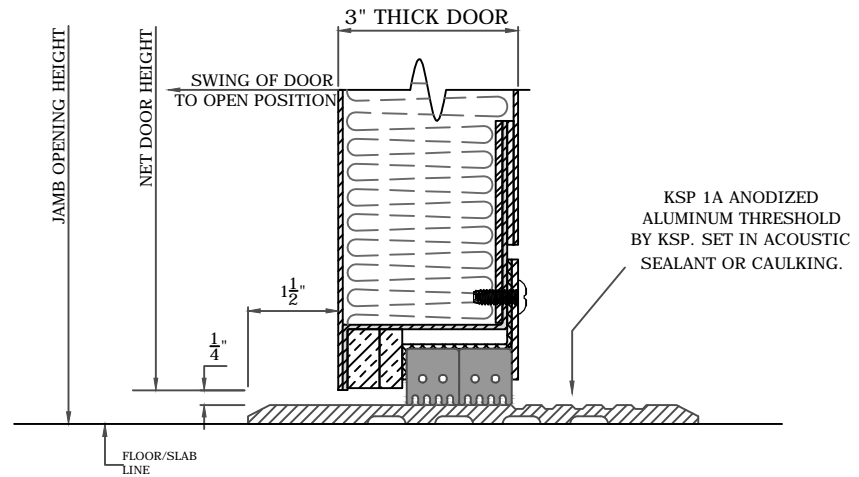
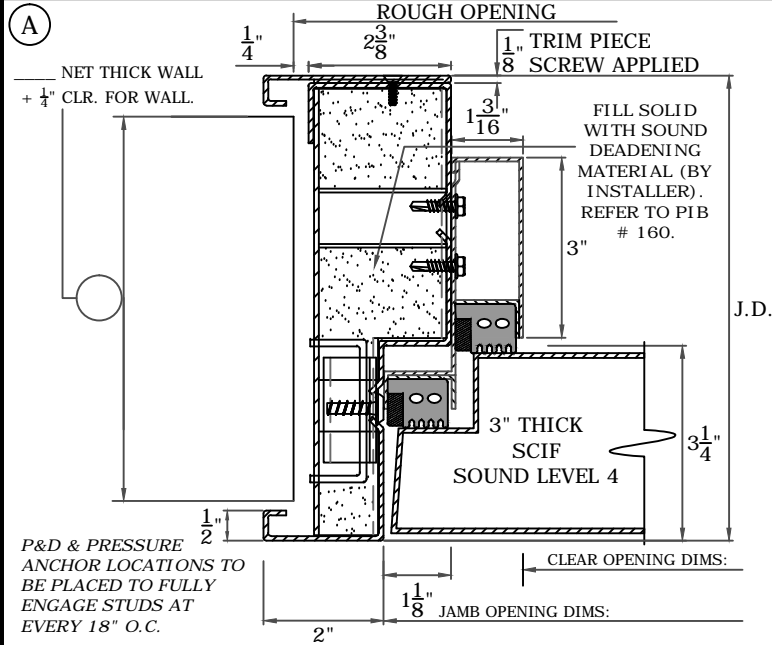


SCIF LEVEL 4
SHORT ORDER

OPENING SIZE - ___' ___" x ___' ___" - ROUGH OPENING = ___' ___" x ___' ___"

(Rough Opening Dimension = Door Opening Width + 3"; door Opening Height + 1- $\frac{1}{2}$ ")



DOOR (MARK #): _____

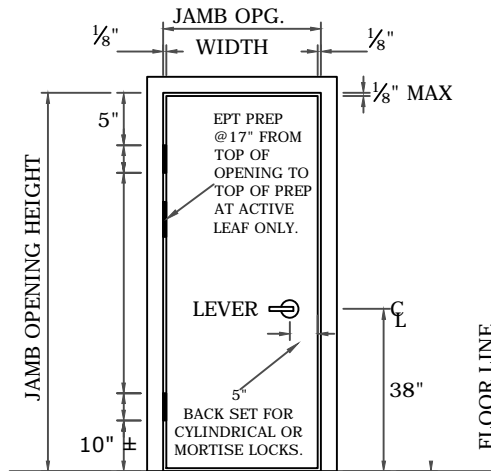
HARDWARE: _____

DOOR HARDWARE: _____

5" X 5" X .250" CAM LIFT HINGES (BY KSP) CLOSER: _____

LOCKSET: _____ HIGH SECURITY LOCK & STRIKE #: _____

KSP 1A THRESHOLD



FOR APPROVAL

1. SUPPLY WALL CONSTRUCTION & DIMENSIONS.
2. ADVISE FLOORING/SILL CONDITION.
3. SUPPLY DOOR OPENING OR ROUGH OPENING DIMENSIONS.
4. CIRCLE HANDING
5. SUPPLY MARK NUMBER
6. SUPPLY HARDWARE SETS/DEFINITIONS
7. SIGN FOR APPROVALS

AS BUILT DRAWINGS WILL BE SENT FOR INSTALLERS USE; PRODUCT BULLETINS/INSTALLATION DOCUMENTS AVAILABLE AT WWW.KRIEGERPRODUCTS.COM/INSTALLATION.

KRIEGER™
SPECIALTY PRODUCTS
PICO RIVERA, CA
562-695-0645

SCIF Sound Level 4 (STC 55/FSTC 50)

SCIF Sound Level 4 (Single)

Project No: _____

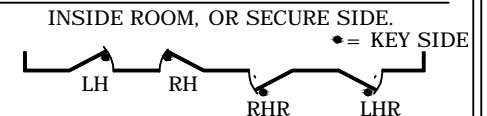
Date: _____

Drawn By: _____

Detail: 

Sheet: _____

SWING DETERMINATION: CIRCLE HANDINGS



OUTSIDE, CORRIDOR, OR NON-SECURE SIDE.