

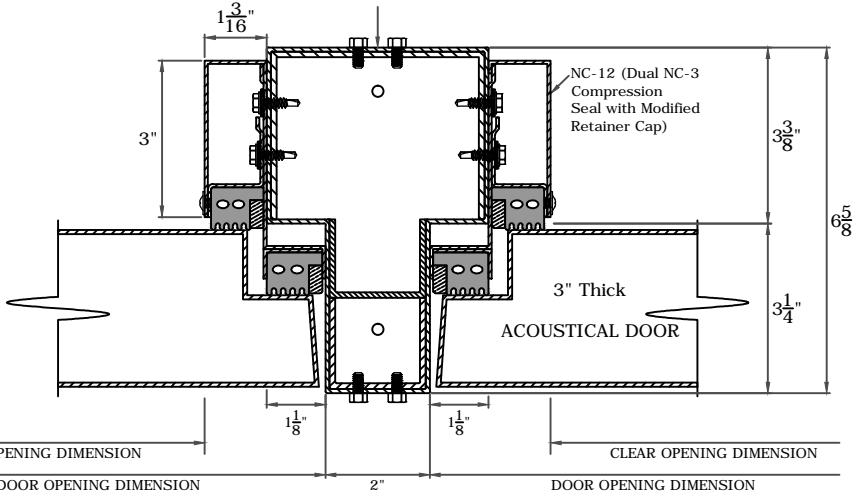
SCIF Sound Level 4
Short Order Form

OPENING SIZE - ___' ___" x ___' ___" - ROUGH OPENING = ___' ___" x ___' ___"

(Rough Opening Dimension = Door Opening Width + 3"; door Opening Height + 1- 1/2")

(MS)

FIELD INSTALL FLOOR ANCHOR &
ATTACHED 1/4-20 DIA. HEX HD.
SCREWS (2) EACH SIDE AS SHOWN. BY
OTHERS

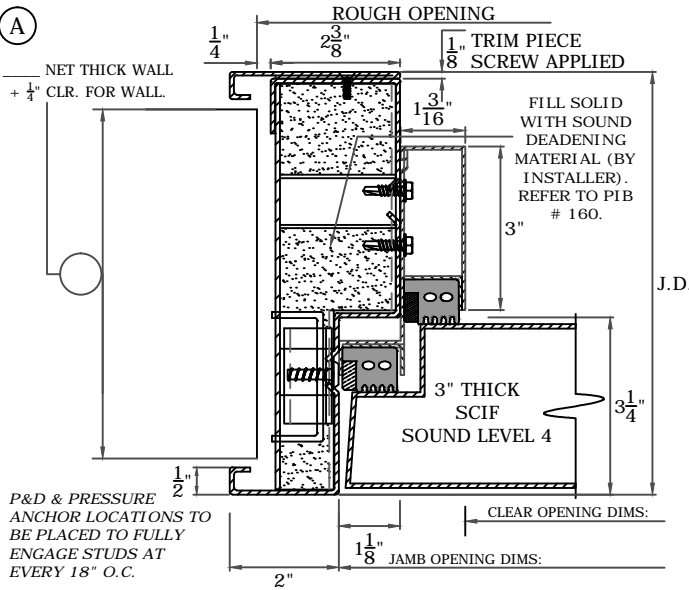


FOR APPROVAL

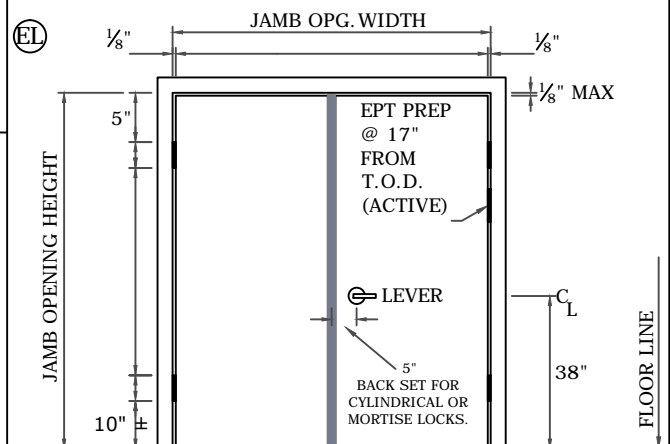
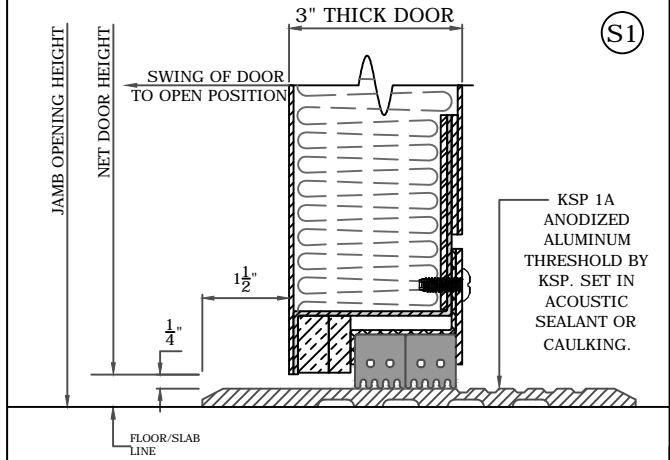
1. SUPPLY WALL CONSTRUCTION & DIMENSIONS.
2. CONFIRM UNDERCUT/SILL CONDITION.
3. SUPPLY DOOR OPENING DIMENSIONS.
4. SUPPLY ROUGH OPENING DIMENSIONS.
5. CIRCLE HANDING (SEE BELOW).
6. SUPPLY MARK NUMBER.
7. PROVIDE HARDWARE SET DEFINITIONS.
8. SIGN FOR APPROVALS

AS BUILT DRAWINGS/PRODUCT INFORMATION BULLETINS WILL BE SENT FOR INSTALLERS USE.

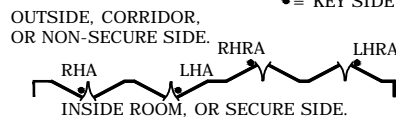
(A)



(S1)



SWING DETERMINATION: CIRCLE HANDINGS



DOOR MARK #:

DOOR HARDWARE:

APPROVED: X _____



KRIEGER™
SPECIALTY PRODUCTS

SCIF Level 4

PICO RIVERA, CA
562-695-0645

SCIF Sound Level 4 Short Order Form (pair)

Project No: _____

Date: _____

Drawn By: _____

Detail: _____

Sheet: _____