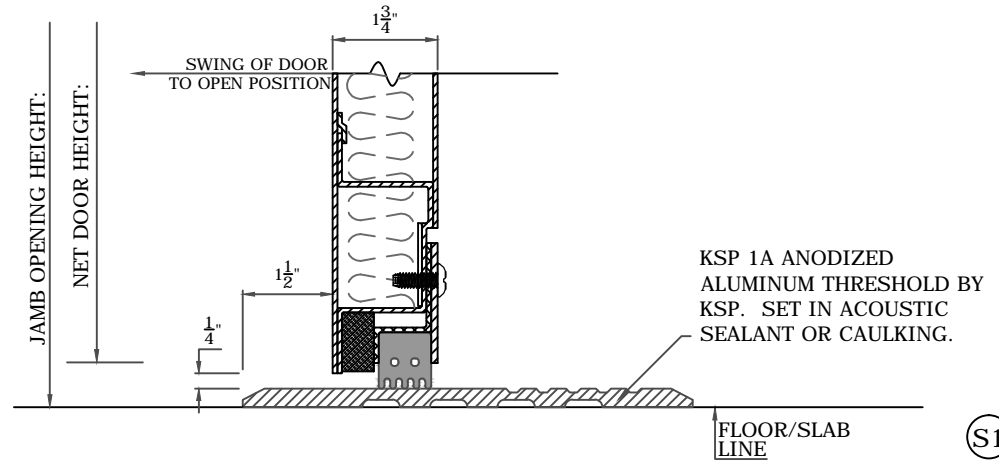
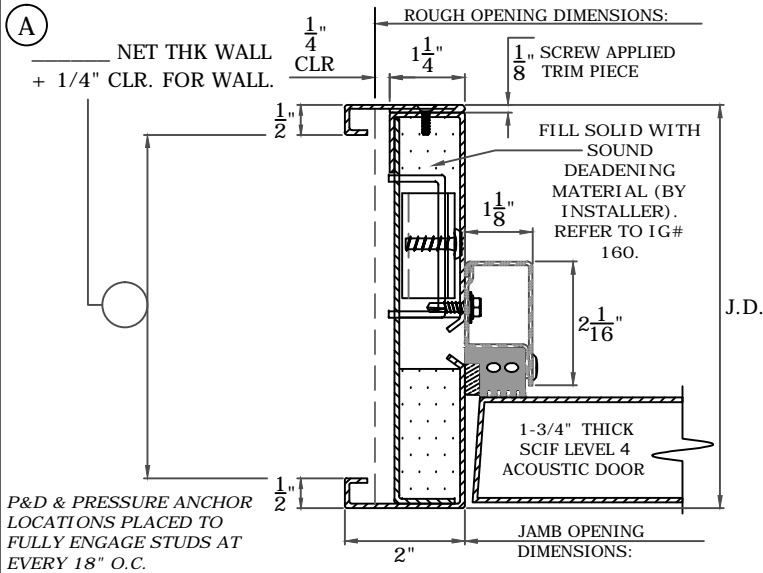


SCIF LEVEL 4
SHORT ORDER

OPENING SIZE - ___' ___" x ___' ___" - ROUGH OPENING = ___' ___" x ___' ___"

(Rough Opening Dimension = Door Opening Width + 3"; Door Opening Height + 1-1/2")



HARDWARE:

DOOR (MARK #): _____

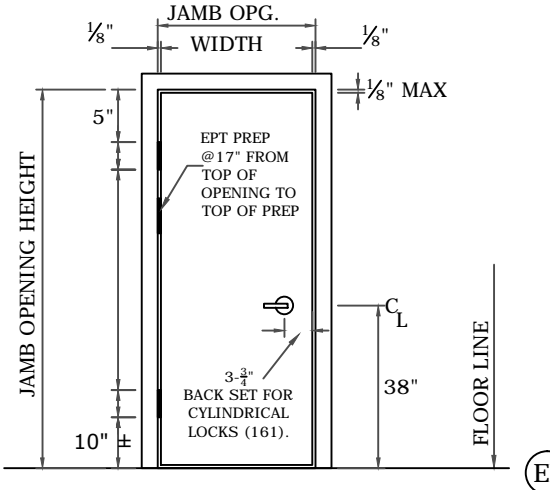
DOOR HARDWARE: _____

5" X 5" X .250" CAM LIFT HINGES (BY KSP)

CLOSER: _____ HIGH SECURITY LOCK & STRIKE #:

LOCKSET: _____ KSP 1A THRESHOLD

APPROVED: X _____



FOR APPROVAL

- SUPPLY WALL CONSTRUCTION & DIMENSIONS.
- ADVISE FLOORING/SILL CONDITION.
- SUPPLY DOOR OPENING OR ROUGH OPENING DIMENSIONS.
- CIRCLE HANDING
- SUPPLY MARK NUMBER
- SUPPLY HARDWARE SETS/DEFINITIONS
- SIGN FOR APPROVALS

AS BUILT DRAWINGS WILL BE SENT FOR INSTALLERS USE; PRODUCT BULLETINS/INSTALLATION DOCUMENTS AVAILABLE AT WWW.KRIEGERPRODUCTS.COM/INSTALLATION.



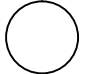
SCIF Level 4 (STC 50; NIC 45)

SCIF Sound Level 4

Project No: _____

Date: _____

Drawn By: _____

Detail: 

Sheet: _____

