



What to Know Before Getting Started

1. **NOTE: This is a general reference guide and each installation is unique. Please contact Krieger for assistance with any specific installation questions.**
2. **It is critical that the surrounding framing be of sufficient gauge and without punches for proper installation of this type of frame.**
3. **To prevent damage or misplacement, seals are shipped separately with the door(s), unless otherwise specified.**
4. **Some gypsum wall board metal-stud partition types will require notching the stud if a fitment conflict exists with the EPT's and/or DPS's mud-box.**
5. **Acoustical frame must be filled with sound-deadening material. Please reference **Installation Guide 160** for more information.**



Download guide

https://www.kriegerproducts.com/support/manuals/IG_160.pdf



We're Here to Help

If after reviewing this guide, you have any questions or concerns, please call us at **562-695-0645** or visit **[kriegerproducts.com/contact/](https://www.kriegerproducts.com/contact/)** for more information.

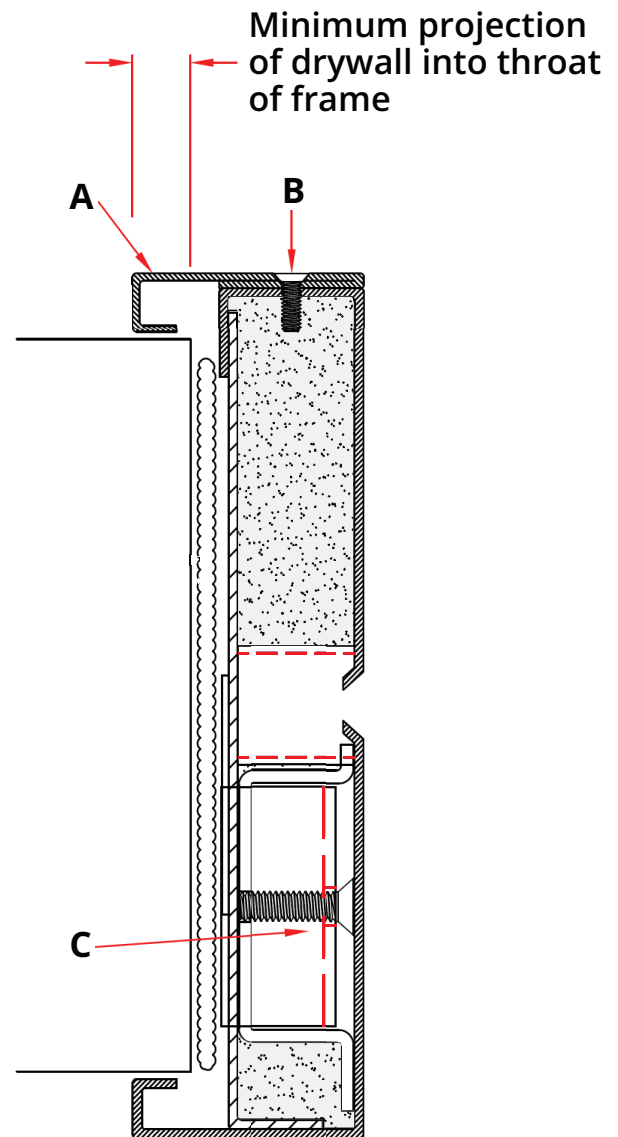
Installation Instructions

STEP 1

- First remove the frame trim (A) by removing the screws (B) and set aside.
- Next, remove the shipping spreader bar from the bottom of the frame. This is for shipping purposes only.

STEP 2

- Slide the frame into the rough opening and set the frame square, plumb and level. Compression anchors (C) are located near the bottom of the frame on each side and are placed to fully contact the adjacent studs; Phillips head adjustment screws are visible through a $\frac{1}{4}$ " hole in the frame.
- The screws should be tightened until the pressure anchors contact the adjacent framing.
- Anchor frame securely by installing anchor bolts (provided by others) and shim as necessary.



STEP 3

- Upon completion of frame installation, fill the Installation clearance void between the back of the frame and wall framing with batt insulation (D).
- Insulation should be recessed $\frac{1}{2}$ " from face of drywall.
- Fill remaining void completely with acoustical caulking around entire perimeter of frame (both jambs and head) (E).
- Remove the spreader from the trim piece set aside earlier.
- Reinstall the trim piece with the provided screws (B).
- Caulk entire perimeter of frame with acoustical caulking on both sides where the frame returns contact the drywall.

End Instructions

