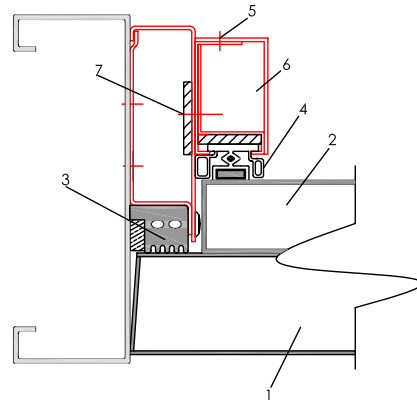


- This assembly is a 1-3/4” thick door (1) with a 1-1/4” thick panel (2). There are two sets of seals on the frame. The outer set of seals is a neoprene compression seal (3) that makes contact with the door. The secondary seal (4) is magnetic and makes contact with the panel.



PERIMETER SEAL ADJUSTMENT

- Rough hang doors with hinges and lock. Remove the caps on the outer set of neoprene compression seals (5). This removes the magnetic seals (6) that are attached to the outer seal cap.
- Refer to PIB 110 items 12 thru 14 for neoprene seal adjustment.
- Remove caps from magnetic seals (6), and replace neoprene seal cap with magnetic seal retainer in place.
- Loosen the screws at slotted holes (7), and with the door in latched position, adjust the retainer so the Magnetic seal makes positive contact with the panel at the entire perimeter. Check adjustment with a thin plastic card. After inserting the card between the door and the seal, it should not fall out under its' own weight at any point the entire perimeter of the opening – See Bulletin 108. At the same time, it should not be difficult at all to remove. If the seals are adjusted too tightly, this could cause problems with the operation of the finish hardware. Final adjustment must be done carefully to prevent sound leaks. After final adjustment, install several “lock screws” between the slotted holes to ‘lock’ the retainer adjustment in place – See PIB 110.
- Close the door several times and re-check the adjustment for positive contact at the entire perimeter. After final adjustment, install ‘lock screws’ on strike jamb to prevent movement.
- The corners of the magnetic seal material are mitered and factory welded by hot melt process. In the event that we do not factory install the seals, they will be shipped as a three sided unit. Extra care needs to be taken when handling and installing this material in the steel retainer. Please refer to PIB 105. In case any small cracks have developed at the corners, they need to be glued to prevent any sound leakage. We recommend the use of Duro-Lucite brand cyanoacrylate, “Super Glue-3”. An Acceptable alternative is Duro “Quick Gel”.
- Check for any light leaks between frame and retainer, or at mitered corners. Close these by tightening or adding screws as required, or by caulking miter joint in retainer from backside.
- The Vinyl & Compression seal should NOT – under any circumstances – be painted! This would reduce the effectiveness of the magnetic tape and the ability to compensate.
- For acoustical compression seal to work properly, they must be ‘compressed’, kept under pressure. Given that pressure, it is IMPERATIVE that the finish coat of paint on the sound doors be allowed to completely cure before allowing those doors to close under pressure against the seals. If not fully cured before pressure is applied, the paint will NOT cure and the doors will stick to the seals.
- FINISH PAINT CAUTION: We recommend the use of alkyd (synthetic oil) based enamel only. Doors must be completely dry before being closed against acoustic seals.