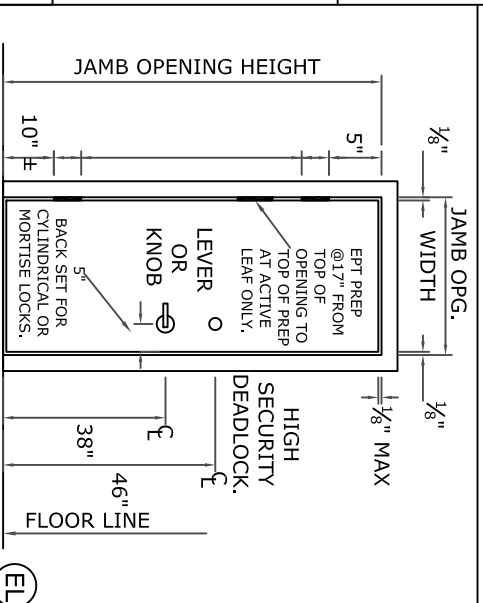
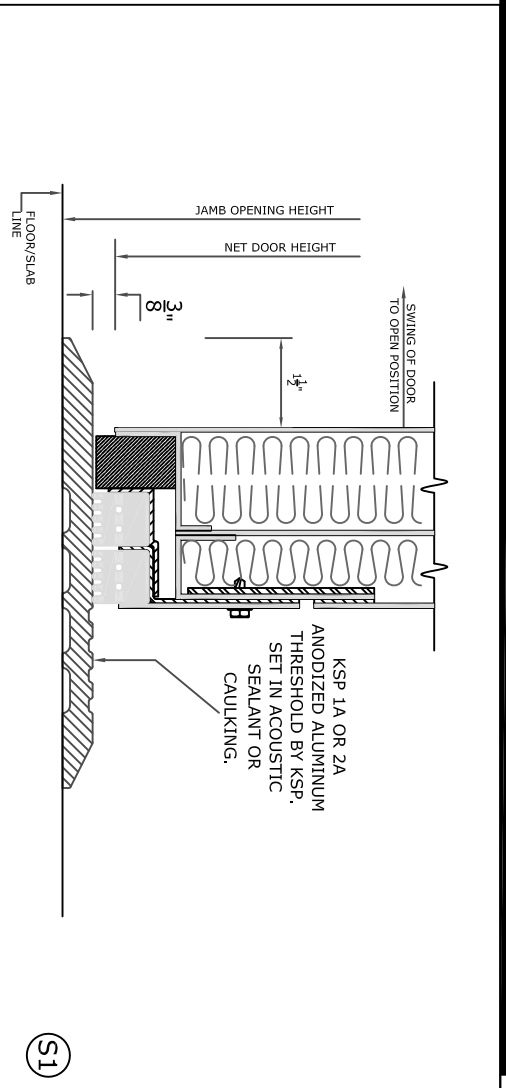
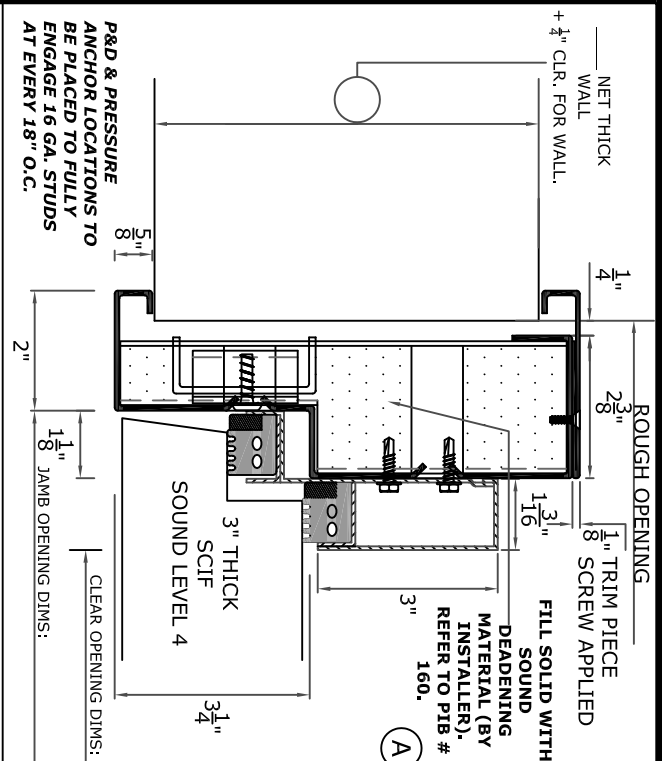


**SCIF LEVEL 4  
SHORT ORDER**

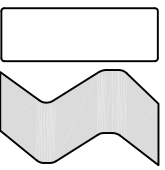
**OPENING SIZE -** \_\_\_\_\_ " X \_\_\_\_\_ " **-ROUGH OPENING =** \_\_\_\_\_ " X \_\_\_\_\_ " **(Rough Opening Dimension = Door Opening Width + 3"; door Opening Height + 1- $\frac{1}{2}$ " )**



**FOR APPROVAL**

- SUPPLY WALL CONSTRUCTION & DIMENSIONS.
- ADVISE FLOORING/SILL CONDITION.
- SUPPLY DOOR OPENING OR ROUGH OPENING DIMENSIONS.
- CIRCLE HANDING
- SUPPLY MARK NUMBER
- SUPPLY HARDWARE SETS/DEFINITIONS
- SIGN FOR APPROVALS

AS BUILT DRAWINGS WILL BE SENT FOR INSTALLERS USE. PRODUCT BULLETINS/INSTALLATION DOCUMENTS AVAILABLE AT [WWW.KRIEGERPRODUCTS.COM/INSTALLATION](http://WWW.KRIEGERPRODUCTS.COM/INSTALLATION).



SCIF Sound Level 4

**SCIF Sound Level 4 (Single)**

KRIEGER STEEL PRODUCTS  
Pico Rivera, CA  
(562)695-0645

Project No: \_\_\_\_\_  
 Date: \_\_\_\_\_  
 Drawn By: \_\_\_\_\_  
 Detail: \_\_\_\_\_  
 Sheet: \_\_\_\_\_

