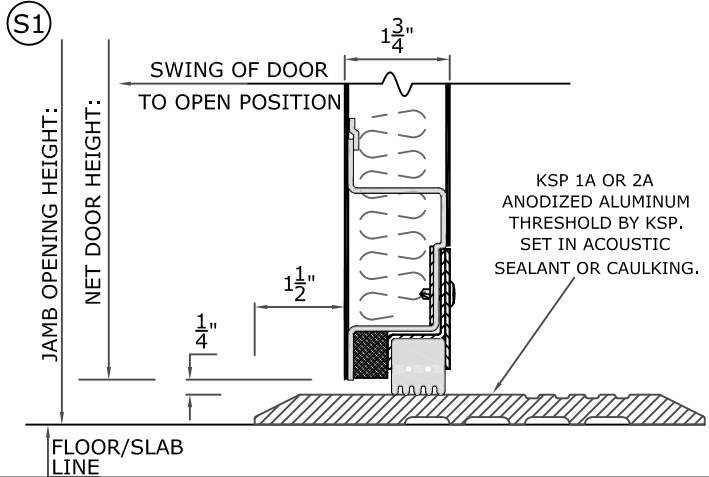
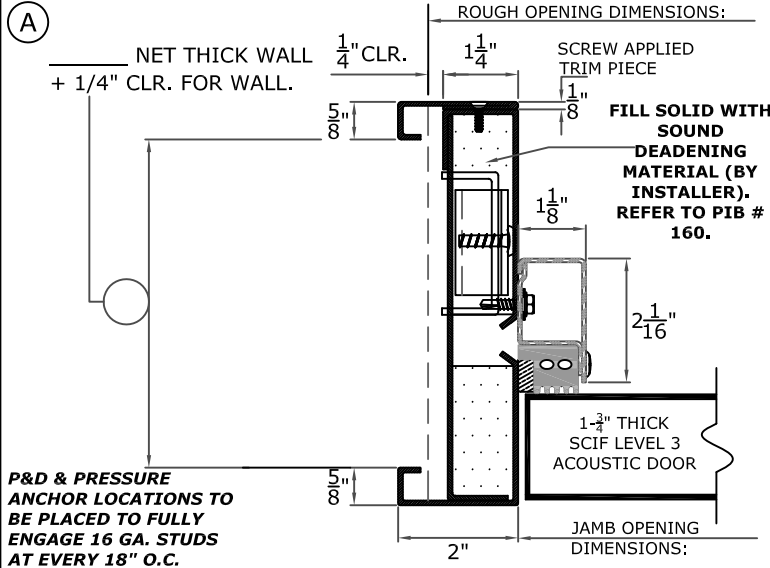


**SCIF Level 3  
Short Order Form**

**OPENING SIZE - \_\_\_' \_\_\_" x \_\_\_' \_\_\_" - ROUGH OPENING = \_\_\_' \_\_\_" x \_\_\_' \_\_\_"**  
 (Rough Opening Dimension = Door Opening Width + 3"; door Opening Height + 1-1/2")



**DOOR MARK #:** \_\_\_\_\_

**DOOR HARDWARE:**

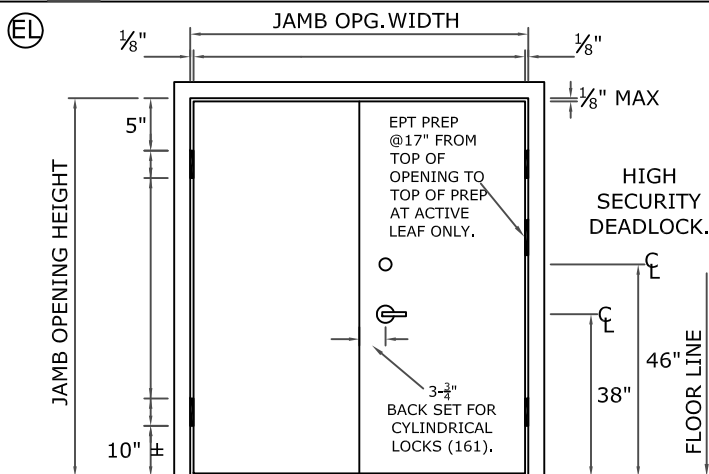
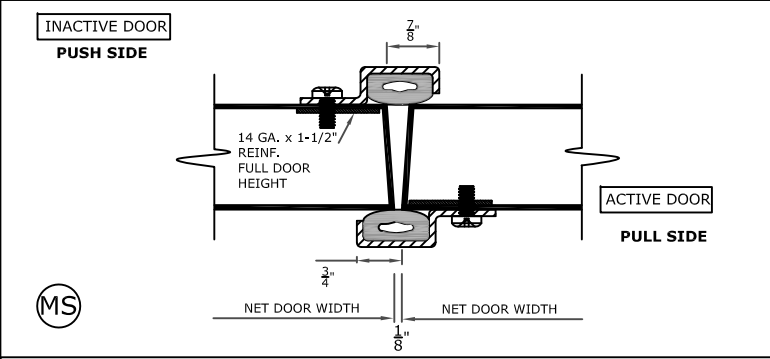
**5" X 5" X .190" CAM LIFT HINGES (BY KSP)**

**CLOSER:** \_\_\_\_\_

**LOCKSET:** \_\_\_\_\_

**HIGH SECURITY DEADLOCK & STRIKE #:** \_\_\_\_\_

**KSP 1A or 2A THRESHOLD**

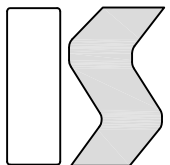


**FOR APPROVAL**

- SUPPLY WALL CONSTRUCTION & DIMENSIONS.
- ADVISE FLOORING/SILL CONDITION.
- SUPPLY DOOR OPENING OR ROUGH OPENING DIMENSIONS.
- CIRCLE HANDING
- SUPPLY MARK NUMBER
- SUPPLY HARDWARE SETS/DEFINITIONS
- SIGN FOR APPROVALS

AS BUILT DRAWINGS WILL BE SENT FOR INSTALLERS USE; PRODUCT BULLETINS/INSTALLATION DOCUMENTS AVAILABLE AT [WWW.KRIEGERPRODUCTS.COM/INSTALLATION](http://WWW.KRIEGERPRODUCTS.COM/INSTALLATION)

**APPROVED: X** \_\_\_\_\_



**KRIEGER STEEL PRODUCTS**  
 Pico Rivera, CA  
 (562)695-0645

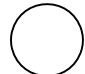
SCIF Level 3 (STC 50; FSTC 45)

**SCIF Level 3 Short Order Form (Pair)**

Project No: \_\_\_\_\_

Date: \_\_\_\_\_

Drawn By: \_\_\_\_\_

Detail:  \_\_\_\_\_

Sheet: \_\_\_\_\_

