



705 SCIF DOOR & LOCK PACKAGE: S&G 2890B TYPE IV - 100% ICD 705 CERTIFIED

3'-0" x 7'-0" 3 Sided Frame and Door Assembly

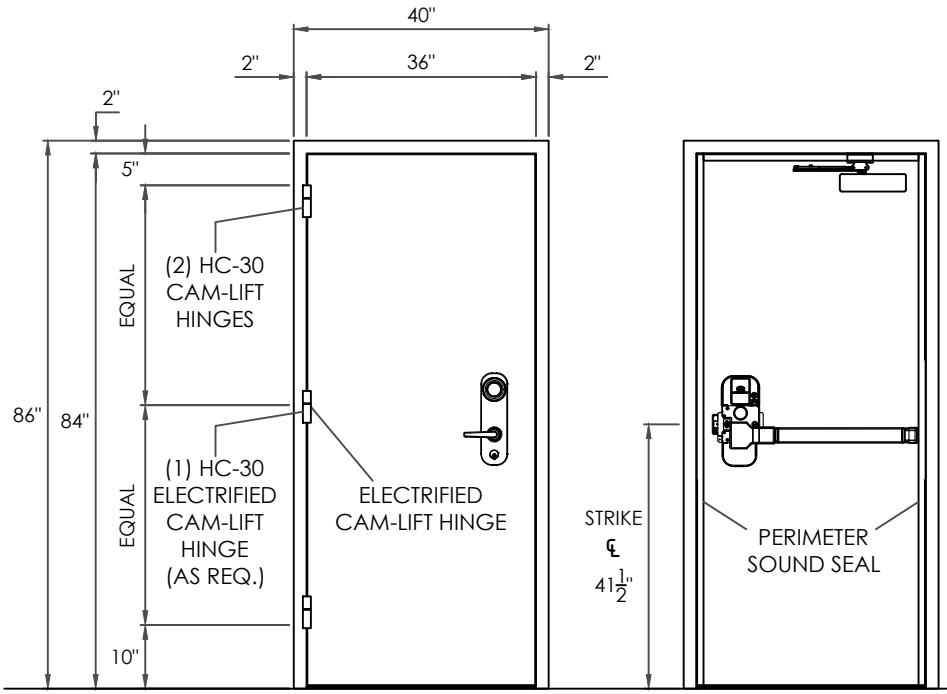
- Krieger's 705 package meets SCIF sound groups 3 and 4 standards and comes with your choice of Sargent & Greenleaf 2890B. We also offer the option of a Lockmasters LKM10K security device, factory installed.
- The customizable 705 SCIF package includes: Slip-in telescoping frame, acoustical door, hinges, closer, lockset threshold, door bottom & seal system.
- The 2 piece slip-in frame can be adjusted to fit wall thicknesses from 5" up to 6-1/4".
- The package is shipped as one boxed unit with the majority of the hardware installed.
- The package be ordered online with a credit card at: <https://www.kriegerproducts.com/705-door-package/>

705 Hardware Information

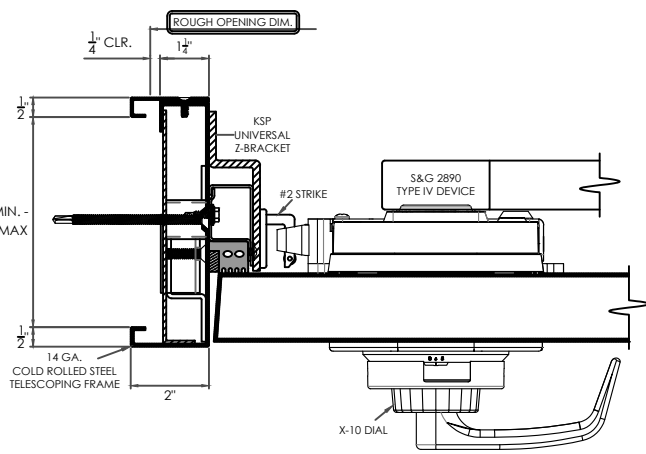
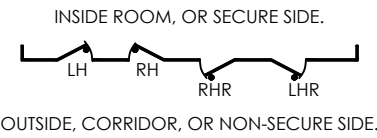
- Conforms to FF-L-2890.
- LKM10K with panic bar or push pull option.
- S&G 2890B with panic bar option.
- Choice of X-10 or 2740 dial with either hardware option.
- Von Duprin EO-99-ALK-F Secondary exit option.

705 Performance Information

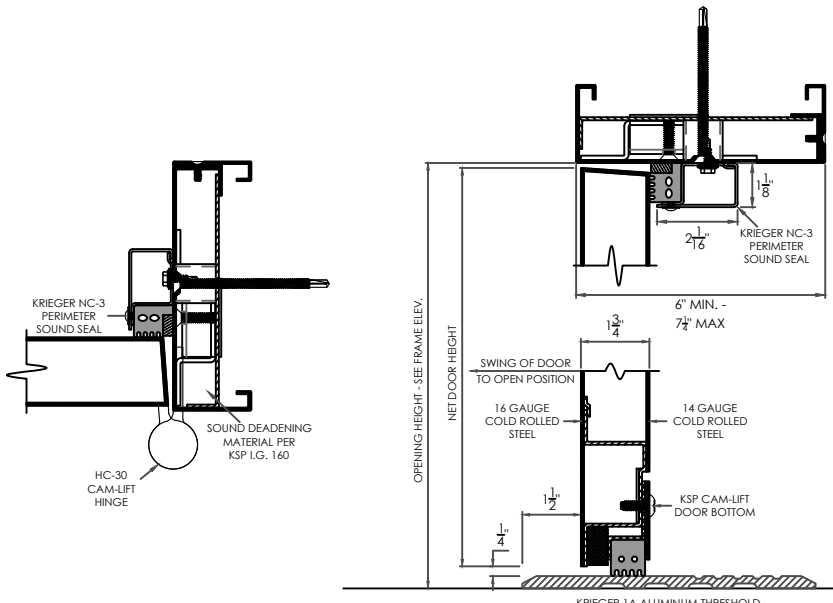
- Can be manufactured to meet Level 3 (STC:45, NIC:40) and Level 4 (STC:50, NIC: 45) requirements per ASTM- E90.
- Can be fire-rated from 20-minutes to 3-hours per UL10C.



VIEW FROM PULL SIDE VIEW FROM PUSH SIDE



HORIZONTAL SECTION



VERTICAL SECTION